

Woodham Walter Annual Report 2015-16

WOODHAM WALTER ANNUAL REPORT 2015-16

APRIL 2016



Parish Council Chairman
Councillor Peter Warren

Inside this publication there are reports and information on:

• <i>Chairman's Report</i>	1
• <i>Village Design Statement</i>	4
• <i>Parish Clerks Report</i>	6
• <i>Financial Overview</i>	7
• <i>District Councillor</i>	8
• <i>Women's Club</i>	10
• <i>Village Lunch</i>	11
• <i>Bell Meadow Village Association</i>	12
• <i>Queen's 90th Street Party</i>	13
• <i>Allotment Association</i>	14
• <i>Footpath Officer</i>	15
• <i>St Michael's Church</i>	16
• <i>Wood Corner</i>	18
• <i>Village Hall</i>	18
• <i>WW Common</i>	19
• <i>WW Primary School & PTA</i>	20
• <i>Friends of St Michael's</i>	22
• <i>Tadpoles Nursery</i>	23
• <i>Neighbourhood Watch</i>	24
• <i>New Waste Service</i>	24
• <i>Speed Indicator Device</i>	25
• <i>Community Agent</i>	26
• <i>Bus Services</i>	27
• <i>General Information</i>	28



Woodham Walter Parish Council From the Chairman...

Welcome again from me, Peter Warren, the Chairman of Woodham Walter Parish Council. I'm coming to the end of my second year in this role and very shortly I will be standing down to make way for the new incumbent. The Council has remained unchanged for most of the past year and at the local elections last May all 7 councillors were returned to office – Joanna Symons (Vice Chairman), James Bunn, Mark Durham, Angus Neale, James Rushton, John Tompkins and myself. Unfortunately in January Angus regretfully decided to stand down after two spells on the Council totalling 6 years of valued service. However in March we have been joined by Jenny

Hughes who has been co-opted into the vacancy. The presence of a young member of the parish on the Council is long overdue! Last, but not least, I must mention the most important member of the Parish Council line up: Jacky Bannerman, the Parish Clerk and Responsible Financial Officer. This is an essential role within our community and involves a considerable amount of work and commitment to keep on top of the stream of correspondence, emails and phone calls that have to be dealt with. Additionally there are the monthly agendas and minutes to produce as well as controlling the parish finances, not to mention the Councillors! There is no doubt that without Jacky the Par-



ish Council would not be able to function effectively.

For several years Jacky has collated this set of reports for circulation prior to our Annual Parish Meeting, making the distribution of information much easier so that we now reach a far wider audience than just those who attend the annual meeting. We would however still strongly recommend parishioners attend the annual meeting on Monday 18th April at 8pm in Woodham Walter Village Hall, Rectory Road, especially this year with the final draft of the Village Design Statement on display for consultation.

Annual Parish Meeting - Monday 18th April

All Woodham Walter residents are invited to attend the

Annual Parish Meeting

On Monday 18th April at 8pm

At Woodham Walter Village Hall, Rectory Road.

- Matters Arising from Annual Parish Reports
- Presentation about the New Waste Collection Service
- Public Forum
- Opportunity to view and comment on the Woodham Walter Village Design Statement Draft Document from 6.30pm

Woodham Walter Parish Council - Chairman, Peter Warren

We also warmly welcome parishioners to all of our regular monthly meetings which are held in the Women's Club in Top Road at 8pm on the second Monday of the month. At the start of each meeting there is a public forum at which any issues of concern within the parish may be raised.

Funding for the Parish Council comes principally from the annual Precept, this being the money returned to us by Maldon District Council (MDC) from that collected via Council Tax. From this money the Parish Council pays for the care and upkeep of the village (such things as grass and hedge cutting, street lighting etc) in addition to providing community funding for several local organisations. Last year we also managed to fund some major tree surgery on the western side of Bell Meadow, this year we're hoping that there will be some spare cash to help support a street party in celebration of the Queen's 90th Birthday. Councillors are very conscious that this money comes from each and every council tax payer in the parish and try to ensure that it is spent wisely.

One of the most important roles of the Parish Council is to be part of the consultation process for planning applications. We continue to consult the neighbours on any new applications received and, after discussion at our meetings, we make our recommendations to MDC for inclusion in their deliberations. It is always helpful if the applicant is present at our meeting. We offer a public forum at the start of the meeting where representations can be

made and if councillors have any queries during our deliberations it is useful to be able to reopen the meeting to the public in order to clarify certain points. Although we only have a limited voice it is an important one and, with the increased number of applications in the past year, our involvement in the planning process is taking up considerably more time at our meetings.

**"IN 2015-16
THERE HAVE BEEN
25 PLANNING
APPLICATIONS TO
CONSIDER
COMPARED WITH
16 IN
2014/15."**

In 2015-16 (to date) there have been 25 planning applications to consider (compared with 16 in 2014-15), of which 8 decisions by the NW Planning Committee of MDC so far were contrary to the Parish Council view. We supported 16 applications and raised objections to 8. Of these applications so far 17 have been approved, 3 refused, one withdrawn and 4 awaiting a decision. In the past year there has been one application for the demolition and replacement of a building, one Claim for Lawful Development, one Change of Use from office use to a dwelling house, 3 applications for New Outbuildings or Extensions to Outbuildings, 4 Extensions, one Extension and New Outbuilding, 3 Alterations to Listed Buildings, 2 new Agricultural Buildings, 3 Variation of Conditions, one Pergola, 2 Amendments to previously approved designs for replacement dwellings and 2 Renewals of Expired Consents. Additionally we considered one application for



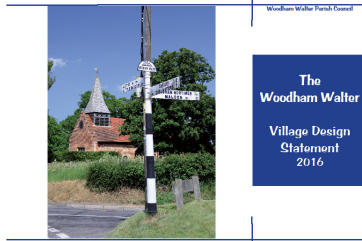
works to trees with a Tree Preservation Order.

In the past year we have held 3 additional (extraordinary) meetings in order to discuss specific planning applications. Two of these meetings were forced upon us by MDC's decision to no longer allow time extensions for the Parish response. The third was held in the Village Hall and attended by 60 people, to discuss an application for 11 new dwellings on land adjacent to Whitegates to the south of Bell Meadow. The Parish decision to object was supported by MDC but subsequently went to appeal, followed by a hearing back in Maldon in February. This hearing was adjourned until June 21st to give MDC time to study new financial documents submitted to the Inspector by the appellants. However the Inspector did take the opportunity to conduct a thorough site visit whilst he was here.



In order that we as a parish have more control over future planning and development it is vital that our Village Design Statement

Woodham Walter Parish Council - Chairman, Peter Warren



meeting the exacting requirements of the district council, is submitted to MDC as soon as possible. I would like to sincerely thank our VDS committee (David Beattie, John Tompkins, Keith Amato, James Nolan and Ken Rennie) for all of their hard work and perseverance in order to get to this stage after several frustrating delays. Since collation of the initial questionnaire returns 18 months ago the VDS document has been enhanced considerably and now contains information about the areas of settlement, our Listed Buildings and the proposed Conservation Area. In addition to use as a planning tool the VDS is also a very readable and informative document for which David, John and team should be congratulated. The final draft will be on display for consultation at the Village Hall prior to the Annual Parish Meeting. After formal endorsement by the Parish Council the document will then be submitted to MDC.

The returns from the VDS questionnaire showed that the number of vehicles speeding through the village was a major concern. Last year with the help of a generous grant from the Bell Meadow Legacy Committee, we were in a position to apply for match-funding which would enable us to purchase our own Speed Indication Device (SID) instead of sharing a

Vehicle Activated Sign (VAS) with other villages, on loan from Essex County Council for a few weeks at a time. However there has been a delay when we applied for match-funding. The information has been submitted to the Local Highways Panel Scheme Validation Team (and is supported by Cllr Channer, ECC) but will not be considered until the 2016/17 Capital Budget becomes available later this month. Just in case our application is turned down we have made provision in the coming year's budget for part of the deficit and would again rely on the generosity of the Bell Meadow Legacy Committee for the remainder.

At long last all of the major potholes in the village have been filled and other defects have been patched. Hopefully in the summer Ringway Jacobs will be undertaking a programme of surface dressing around the village to complete the job. Throughout the



year Jacky is constantly reporting problems to ECC Highways Dept and chasing up on their progress. I would urge you all to report issues yourselves as the more people that do, the more likely we

are to get a solution. There is a page on the ECC website for you to report problems:

<https://secureweb1.essexcc.gov.uk/Highways/Report-a-highway-problem.aspx/>

The annual litter pick took place mid-February and as usual we managed to collect 30 black bags full of rubbish. Many thanks to Colin Warner for organising the collection and disposal of the bags. Thanks to those who took part and also the other people around the parish who regularly clean up their road throughout the year keeping the village looking good.

I would like to end with the traditional but heartfelt thanks to all of the other Councillors especially Joanna (our Vice Chairman) and our hard working Parish Clerk. I look forward to continuing working with you all in the year to come.

Councillor Peter Warren
Chairman, Woodham Walter
Parish Council



Village Design Statement Working Group



The first draft of the Village Design Statement (VDS) was exhibited at last years' Annual Parish Meeting and over the past year the Working Group has been involved in meetings with Maldon District Council Planners, the Conservation Officer and RCCE (Rural Community County of Essex) in developing the final document, part of which was exhibited for comment at Bell Meadow Day in August 2015.

The VDS is primarily concerned with the visual character of the village and how it can be protected or enhanced. It is an important evidence based document that has been wholly driven by the VDS Questionnaire to which in excess of 75% of households responded in Spring 2014.

Currently available for viewing and reviewing on the Parish Website, the document looks at the development of Woodham Walter and covers geology, topography, growth and character of the Defined Settlement Area and twenty one other areas of settlement, design relationships, materials, building styles, roads, lighting,

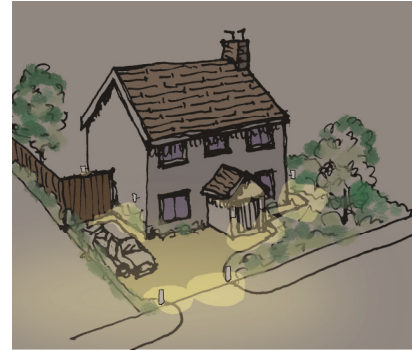
street furniture and landscaping, heritage assets and the proposed Conservation Area. It also defines threats to the local character.

It provides easy to read Guidance for residents, designers and developers and should be referred to whether Planning Permission is required or not.



It is relevant to new buildings and extensions, external alterations, garages, dormers, windows replacement, re-roofing, external wall and roof finishes and colour, boundary walls, fences or gates, street furniture and landscaping, solar panels, satellite dishes and more.

Following a review by parishioners online and at the Annual Parish Meeting, the VDS will require endorsement by the Parish Council before being submitted to Maldon District Council for adoption as a supplementary document to the Maldon and District Characterisation document and the Local Development Plan. The VDS will provide invaluable support to both the Parish Council and the District Council when considering Planning Applications.



The full VDS will be on display at the Village Hall at the Annual Parish Meeting from 6:30pm onwards. Please come and see it, your comments are very important!

You can also view the full VDS at www.essexinfo.net/woodhamwalter-pc and give comments at the No Reply address

vdsconsultation@btinternet.com

David Beattie, Chairman.

VDS Working Group Members:

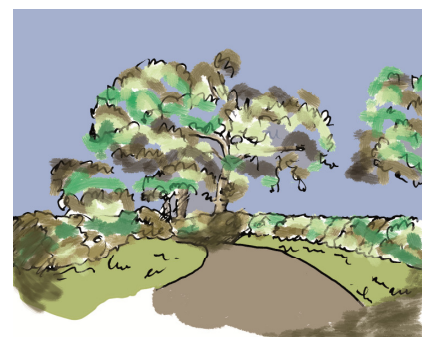
Keith Amato

James Nolan

Ken Rennie

John Tompkins

James Bunn and Peter Warren (PC representatives).



Village Design Statement Working Group



Woodham Walter Parish Council

The
Woodham Walter

Village Design
Statement
2016

Woodham Walter Annual Parish Meeting

MONDAY 18th APRIL 2016
8pm Woodham Walter Village Hall

Woodham Walter Village Design Statement

The VDS Public Consultation document will be exhibited at the Village Hall from **6.30pm on Monday 18th April** when members of the VDS Working Group will be in attendance to receive comments. This will have a significant impact on the future of our Village, so your views are very important.

Parish Clerk's Report - Jacky Bannerman

Woodham Walter Parish Council is involved in planning consultations, the care and upkeep of the village, street lighting and any other local issues. It is the job of the Parish Clerk and Responsible Financial Officer to carry out the functions, serve or issue all notifications required by law and carry out the decisions of the Parish Council.

During 2015/16 we provided community funding to local organisations to help with maintenance including Women's Club (£155), Village Hall Association (£210) and St Michael's Church (£198). We make an annual grant to the Essex Wildlife Trust (£110) towards their work managing Woodham Walter Common. It was a shame the Silver Threads group took the difficult decision to disband after many years of service to the village and so no longer needed their usual grant - thanks to Ann Mulley, Ann Maxwell and Sheila Wade who kept the club going for so long.

We have an agreement to help pay towards the maintenance costs of the Community Playground facility at the school up to £400 per year. The playground is open to the community outside of school hours.

Parish councils are statutory bodies. Members are elected for a term of four years. May 2015 saw a contested election for Woodham Walter - it is the first time for many years that this has happened. The cost to the Parish was £555.49. We have to pay Maldon District Council (MDC) for voting forms and towards the hire of hall, staffing and count costs. The result of the election was that the same team were elected as Parish Councillors.

Parish Councils are funded principally by an annual precept. Income and expenditure for the next financial year are calculated in the form of estimates, this is added to the council tax collected by MDC and

paid to Woodham Walter Parish Council annually. Parish councils can apply for other funding such as grants. We also receive income from the hire of the Party Tents. During the last financial year we raised £1075 in hiring income.

Councillors have agreed that the precept requirement for Woodham Walter in 2016/17 will be £12,333.00 which works out at £45.66 per Band D property for the year.

At the end of the last financial year we successfully received a grant of £1097.31 from the Government's Transparency Code Fund. All Parish Council's have to adhere to this code and the fund was made available to aid compliance. This grant will be used to purchase a laptop, scanner and for staff costs associated with the additional work required to achieve compliance. Most of this work has now been completed and the Parish Council website now has additional information available so that that parishioners can view financial documents, agendas and minutes in order to meet the governments desire to place more power into citizens hands to increase democratic accountability. Transparency gives local people the tools and information they need to hold local public bodies to account. So have a look at the Parish Council website and see what you think!

www.essexinfo.net/woodhamwalter-pc

In 2016/17 we have set aside £250 towards the Queen's 90th Birthday Street Party celebrations on Sunday 12th June. I'm looking forward to arranging this event along with Councillor Joanna Symons and our team of volunteers. We are hoping to re-create the lovely occasion we remember back in 2012 held for the Diamond Jubilee. Fingers crossed for the sun to shine. Do check your wardrobes for some nice Red, White and Blue outfits!

We have also budgeted for expenditure on producing the Village Design Statement document, some new bags for the Party Tents along with some contingency spending should we not be successful in our funding request for the SID (Speed Indicator Device).

One of the examples of our lovely community was when we were donated a large quantity of daffodil bulbs by local resident James Richmond. I sent out one of my village emails asking for help and was astonished at the response - I distributed the bulbs to local organisations including Women's Club, Village Hall and the School along with a large team of about 20 people who have planted them here there and everywhere around the village - it is now such a pleasure to see the results all around!

This November I will have completed 10 years as your Parish Clerk. Many is the time that my diplomacy skills are tested and this is not always easy but I take great pride in my community role and try to keep all the people happy most of the time!

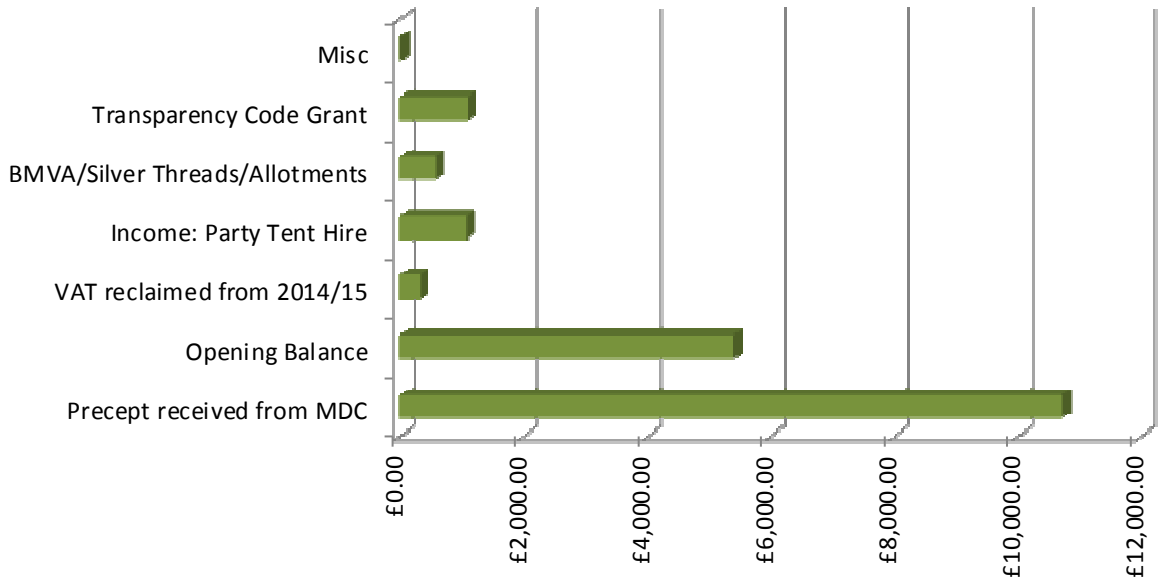


The clerk position is a paid one but all the councillors are volunteers and I would like to thank each of them for their time and commitment to this important position. And in particular to Cllr. Peter Warren as he comes to the end of his Chairmanship, it has been a pleasure to work with him and I look forward to his continuing role within the Parish Council.

If you would like to be included on the village email for local information please send me your email address jacky@wwparishclerk.co.uk

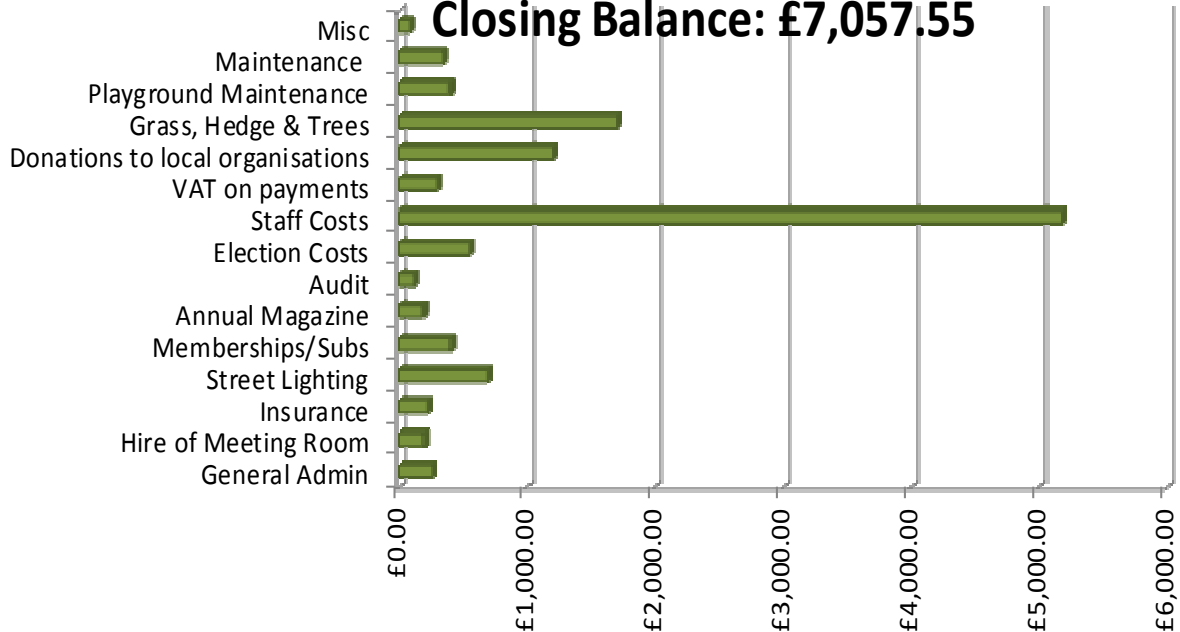
Woodham Walter Parish Council - Financial Overview

Income & Opening Balances 2015/16 Total: £19,241.72



Expenditure 2015/16 Total: £11,882.52

Closing Balance: £7,057.55





District Councillor, Mark Durham



Twelve months ago we were approaching another election for both local councils and the general election. It hardly seemed any time at all since Henry Bass and myself were elected as district councillors for Wickham Bishops & The Woodhams in 2011. During this initial four year period, we had worked hard to represent the ward and villages that fall into it.

These are Wickham Bishops, Little Braxted, Utling, Langford, Woodham Walter, Woodham Mortimer and Hazeleigh. Henry and I try to share responsibilities and get to as many parish council meetings as we can. This isn't always easy as many fall on the same day and the schedule of meetings at Maldon District Council often prevents us from getting to as many as we would like. This has been compounded by internal roles at MDC with Henry now being Vice Chairman of the Council and I am currently Deputy Leader of the council. Before I decided to stand for the seat, I recall someone telling me that being a District Councillor didn't take too much time and that it would be easy to balance the workload. Perhaps somewhat naively I took this at face value, only to find that this year I attend

three, maybe four evening meetings a week and sometimes have to spend the equivalent of two full days in the Maldon office. I do however believe that we do a good job delivering the services for which the district council is responsible. As Deputy Leader, I also have to attend many County meetings as well, not to mention several events across the UK.

The District Council has had to face several serious challenges in the last couple of years, the most significant being the preparation and submission of the Local Development Plan. This plan sets out the guidelines for housing, gypsy & traveller provision, infrastructure and employment facilities for the next 15 years. Every authority in the country is under acute pressure to build more houses with targets being sent down from central government. Maldon set its housing targets and presented its draft plan to the government in early 2014, there had to be some adjustments to housing numbers that year, increasing to 4,410 new homes. In January & February 2015 the plan had its examination in public, overseen by a senior planning inspector. During the public hearings many people were able to give evidence and at the conclusion of the examination the council officers were hopeful that the inspector would agree the housing figures and move onto the other elements of the plan. However on May 8th the inspector sent a letter informing the council that he did not agree with the gypsy and traveller policy and because of this, he found the whole plan unsound. The implications of this were critical to the council as it effectively meant that it would be very difficult for us to refuse planning applications even if they were unsuitable or on a scale too

great for the local community. This was due to the fact that decisions had to give more weight to national planning rules than the local provisions set out in our plan. The council's legal advice led us to request that The Secretary of State call in the plan to assess whether the decision of the inspector was reasonable and proportionate. This was the very first time that any council had been successful getting the government to review a plan and for this reason it took many months for the DCLG (Department for Communities & Local Government) to look at the case and make a decision that could have major implications for not only Maldon, but many other local authorities in the UK. During this time we were at the mercy of the Planning Inspectorate who were determining many applications that MDC had refused and in several cases ruled against us and the local community.



*Cllr. Mark Durham with
Rt Hon Greg Clark MP*

On March 6th, Greg Clark MP, The Secretary of State published his decision which was that the planning inspector had not been correct in his assessment of the plan and therefore that the process could continue with another inspector. Clearly this has been welcome news for the district council and we are now hopeful that things will be clearer and we will have the power to resist development where it isn't wanted.

District Councillor, Mark Durham

It is inevitable though that some applications will be granted as the planning inspectorate are an independent body and they have a tendency to interpret rules in differing ways sometimes. In the last few months the council has been consulting with parish councils and landowners to identify areas where rural housing can be allocated. This included potential sites for the provision of additional gypsy sites. The results of this have not been published yet, but I am highly confident that Woodham Walter will not see any increase in the number of gypsy pitches in the parish.

We sincerely hope that our local development plan can be completed during the course of the next few months, hopefully with an adoption later this year. This will have an impact on the Village Design Statement work, but I am hopeful that this will also be finalised by the end of the year. I would like to take the opportunity to congratulate the VDS team for their hard work putting the statement together. These documents are very complex and detailed and there are a lot of hurdles to overcome before they can be accepted. The Woodham Walter final draft will have to go out for full consultation in the coming weeks, so I urge everyone to look at it online or request a hard copy to read. The parish council needs to receive comments back from parishioners fairly soon, so please take the time to read it and respond. This document will eventually be used as a design guide for future planning in the village, so it is very important that the views of the community are taken into account.

During the course of 2015 Maldon District Council had to procure a new waste collection

contract and I was elected to chair the working group to look at the various options that were available within our budget. Until now, Maldon is one of the 30% of local authorities who still collect residual waste (not recyclable) weekly. Our recycling rates are also one of the lowest in the county. Disposing of residual waste costs the county council £64m a year and this ends up being paid for by every council tax payer. One way to reduce these costs is to change the collection methods and increase the recycling by making it easier and simpler. On 1st February 2016 we started a new contract with Suez who are one of the largest waste reprocessing companies in the world. Until June 6th, collections will be as they have been previously, but in the next few weeks every household will receive a wheelie bin, a supply of clear recycling sacks and if they need them, new food waste bins. From June 6th we will operate what is known as 'Alternate Weekly Collection'. Every week the food waste caddy will be emptied and on an alternating basis either the recycling sacks or wheelie bin will be emptied. All recyclables except glass will go into the sacks and glass will go in the plastic bin. This means that you will not have to sort out the cardboard, paper and plastics. It will all go in the bag together. I am certain that this will be easier for everyone and with new wheelie bins, the vermin will not be able to rip open the black sacks and cause the litter problem we have now. The new contractor also has very sophisticated cab technology which will help monitor the lorry progress and reduce the number of missed collections etc.

Maldon District Council is faced with many more challenges in

these continuing days of austerity. The financial climate for local authorities has changed dramatically in the last couple of years and central government have now told us that within three years, all local government will be funded by a combination of council tax and retained business rates. The government grant system that has previously funded district and county councils will end. This phasing out of grant has been forced on councils for a few years now and Maldon DC is facing a massive budget gap in the next two years. We are therefore anxiously waiting for further details about the new arrangements from The Chancellor later this year.

We continue to work towards a new hospital for Maldon, maintenance of key services, promotion of businesses, promotion of tourism, sports, recreation & park facilities as well as working with partner organisations to achieve wider rollout of high speed broadband and improved roads etcetera. I am constantly surprised at the scope of the council's responsibilities and it has been and continues to be an honour and privilege to serve as a member and represent the villages in the ward of Wickham Bishops & Woodham.

Both I and Henry are always happy to speak to parishioners and help wherever we can. In many cases people have issues that are not within the remit of MDC, but we both know where we can turn to if necessary. If we don't know, we know someone who does!

MFL Durham



Woodham Walter Women's Club - Jean Newton



My goodness where has this year gone, I am sure that the year's get shorter the older we get. Women's Club has enjoyed another year, the monthly meetings are for the most part well attended, with interesting and varied speakers organised by Gill. The monthly Village Lunch has been running for over a year now and is well supported, and those who attend enjoy a varied menu and good company.

Fund Raising Events In July we had four hectic days in the Tea Tent at the annual Flower Festival in St Michael's Church, thank you to everyone who bakes cakes scones and serves the teas and coffees. Also a huge thank you to everybody who helps behind the scenes washing-up etc. without all this support the Tea Tent wouldn't be able to function. Bell Meadow Day at the end of August was well supported and our cake stall proving popular as did Penny's tombola stall, a huge thank you to Penny as she single handedly collects and cross-references all the items. The Jumble Sale in October at Danbury, we have to thank the team from the Village Hall who help us make the event run smoothly. These are our main fund raising events. In November we hosted a very successful evening in the Village Hall – "An Evening of Magic", it was good to see the Village Hall so full and everybody

enjoying themselves, the evening was a good boost to our funds. We have also had a few coffee mornings in the club room, some of these have been poorly supported, in May we will probably host another one and see how popular it is.

Other Activities The Founders Day outing we visited the Museum of Power some of us were on grand-parenting duties so we were accompanied by several small fry. We arrived in torrential rain but that didn't dampen spirits, we and the smaller members of the group enjoyed looking around at the interesting exhibits and testing some out. Then we adjourned to the tea room to enjoy a welcome cup of tea and a piece of cake (which we haven't made). As we left it was lovely to see the sun had returned. The annual Village Revue returned in November and the Club Dance Team took to the stage once again, this year something a little different. The stage was transformed into an office with eight Dolly Parton's sitting at desks some pounding away at typewriters, ready to burst into the iconic number 'Nine to Five'!!!! December swiftly followed and before we knew it Christmas was upon us, we had a lovely social evening in the club room, quizzes and lovely light refreshments provided by committee members.

Father Christmas made his usual visit and we rounded off the evening singing a few carols. In the New Year a post Christmas Lunch was held at the "Bell" this has become a most enjoyable annual event for the club. Thank you to the "Bell" for making us so welcome.

We have been so fortunate to receive a legacy from our past president Enid who passed away in 2014, in remembrance to her we decided to purchase a garden bench with an inscription engraved on it. With the remainder of the legacy we have had a patio laid with the bench being bolted down to it.

Once again I would like to thank the Committee who have always given me unstinting support over the past year, to club members who attend the monthly meetings sometimes when the weather is rather inclement. Women's Club meets on the 4th Tuesday every month at 7.30 pm in the Club Room, Top Road. We always welcome new members and guests to our meetings. Dates, speakers plus our activities are always mentioned in the monthly Parish News.



Woodham Walter Village Lunch Club - Sally Bull



Since it's first serving in November 2014, Village Lunch has really taken off and is now a confirmed fixture in the village calendar on the first Monday of every month.

The lunch was set up to give older people in the village the chance to get together informally with friends and neighbours who they perhaps don't see very often due to illness, being house-bound or having just lost social contact. It is amazing how quickly contact can be lost with those living nearby and coming to the lunches has been a great way for our villagers to reconnect with each other and old friends in a warm and welcoming environment. In addition, in this age of consuming ever more 'ready meals' the lunch was to provide people living on their own with the opportunity of a good quality home cooked meal.

Good quality food is the mainstay of the Village Lunch and Linda Hamilton, who does all the cooking, is passionate about using outstanding quality ingredients which she is proud to source locally where possible. In addition Linda cooks delicious lunches themed with the seasons and so an autumn lunch may be west country pork casserole followed by sticky toffee pudding while a summer lunch would include poached salmon with a lemon meringue pie for dessert. Whatever the time of year Linda's cooking is fantastic and there are always clean plates all round!

Linda is helped by volunteers Jacky Bannerman, Cathy Barber

and Sally Bull who happily don their aprons to assist with the serving and washing up! In addition members of the Women's Club help out as needed, and all of this help is much appreciated. The lunches couldn't go ahead without this enthusiastic team of volunteers and so a big and sincere "Thank You" to all.



Village Lunch is a non profit making venture. Guests pay £6.00 per lunch which covers the cost of the food ingredients and hire of the Club Room.

Guests arrive for 12 noon with lunch served at 12.30pm. Afterwards tea and coffee is served with guests usually heading home for about 3pm. We regularly have 20 guests who generally book on a rolling month by month basis and this is exactly what we wanted to happen so that we have the same core group attending who can re establish or make new friendships over time.

So far Village Lunch is meeting it's objectives; guests are back in regular contact with their local friends and neighbours; it is great to see everyone chatting and catching up with each other in our fun and friendly environment. In addition the lunch provides a nourishing and delicious home cooked meal for our guests.

If anyone would like more information about Village Lunch please contact either Sally Bull on 01245 227908 or Jacky Bannerman on 01245 222595.



Photographs are all from the Village Lunch in April where we helped George celebrate his Birthday with friends, family and cake!



Bell Meadow Village Association - Mark Durham

Bell Meadow Day 2015 took place ten years to the day after the first event in 2005. This prompted me to consider just how far the event has evolved over the decade from what was initially planned to be a one off celebration to what we see now. Bell Meadow Day is now one of the biggest village events in the area, consistently attracting over 2000 people each year. I still have vivid memories of the first year, putting together a motley selection of tents and marquees, most with various bits missing, starting to cook the hog roast in the small hours and then wondering if anyone would actually turn up the next day! There were only half a dozen stalls that year and most were by local people.



Some of the highlights were Frank Herrmann's tie rack, James Bunn's weird vegetables and the sight of Darren and Ashley desperately trying to find enough properly cooked pork on the enormous pig that had been roasting most of the night! The show finished up with The Thurrock Youth Jazz Orchestra performing on a makeshift stage. I recall that a few of the musicians ended up back in The Queen Victoria to play to those who still had the energy.

Bell Meadow Day has grown and evolved over the years with a good number of people taking turns to be on the organising committee. The continued success of the event is largely due to all of the time and effort put in by everyone who has contributed in any capacity. Apart from myself, I think that only Darren & Amanda Durant have done every year, even though we all say 'Never Again' almost every August Bank Holiday Monday after the event. Most years the weather has been kind, but on a few occasions we have had a bit of rain, but never enough to stop the event or even dampen our spirits. I think this year may be the last one of a few of us, so I would like to take this opportunity to thank everyone who has helped us since 2005. I really hope that Bell Meadow Day continues under a new leadership.

The show in 2015 was a huge success and we had made a few changes to the style of the event. There were over 40 stalls with some excellent craft and country displays. One of the most popular with the children was the lady with the pygmy hedgehogs and snake, but there was really something for all. The arena displays were slightly different in 2015 with Geoff Hicks going it alone



with a fantastic dog show. He is making a reappearance in 2016 and promises some surprises. For the last eight years, Bell Meadow Day has concluded with our resident band 'For Funk Sake' live on stage. The stage itself has grown from a rickety scaffold platform to a purpose build and acoustically improved show stage. Andy and his band have supported us for a long time and for many people their show is one of the summer highlights in the village. This year however we felt that a change was needed and therefore For Funk Sake get a day off and we have booked another band, which I am sure will be just as exciting. They have been told that everyone will expect to be dancing in front of the stage, so I am sure they will oblige!

Events like Bell Meadow Day do not happen without a lot of time and effort by whichever group is holding the reins. I am very pleased that we have a committed team again this year and I am sure that we will bring about a few changes to keep things fresh. We don't want to see it become too commercial as at the end of the day, it is a Woodham Walter Parish event. WE are always looking for local people to help, either beforehand or just at the show week end. Lists go up in the village, so please volunteer for something to keep this special day running for many years.
MFL Durham
Chairman BMVA

Queen's 90th Birthday Street Party - Sunday 12th June



Woodham Walter Queen's 90th Birthday Street Party

**Top Road on Sunday 12th June from 1pm
to which all parishioners from the
youngest to the oldest are invited.**



Plans are developing for another memorable afternoon including a lunch of sandwiches & cakes. Similar to the Queen's Diamond Jubilee party in 2012 we will be closing Top Road, putting up the party tents and hope to have another wonderful community celebration.

Free Tickets can be collected soon so we can get an idea on numbers.

(See Parish Magazine and posters for details)

We will need some help again... including donations of cakes etc The Womens Club have once again offered to make the sandwiches and serve teas and coffees but we also need people to help set up and clear up plus stewards and first aiders. Please fill in the form delivered with the magazine or contact us via the details below.

Next Planning Meeting, Thursday 28th April

at 8pm, Women's Club Room, Top Road

Please come along if you are interested in being part of the organising committee for our village celebration of the Queen's 90th Birthday.

More information from:

Councillor Joanna Symons

symonsjm@aol.co.uk

07771 742814

Jacky Bannerman

jacky@wwparishclerk.co.uk

01245 222595

Woodham Walter Allotment Association - Jane Weedon



setting up and clearing away. Our conversations covered our growing experiences along with the usual village gossip and plans for the following growing year. Sadly not everyone could join us, I will try to notify everybody earlier so more of us can meet up for the annual B.B.Q.

We thank Chris Wheadon for continuing to share his horticultural knowledge with us via the Parish News with his very useful 'Growing Tips' articles. Our Allotment Association has been running 7 years and again we must thank Peter and Bryony Maynard for making this thriving scheme available to the local community.

Jane Weedon
Co Chairman
Treasurer

Every growing season is different either too much rain or not enough at the right time and as ever the weeds and the grass are always growing. We have suffered from quite a lot of animal damage with seed nibbling mice, sweet corn pinching squirrels and cabbage munching rabbits.

Despite all these problems we continue to harvest and process our crops some of which we shared at a B.B.Q. in September at the allotments. As ever we brought copious amounts of food which we consumed with many glasses of wine, thank you to all the contributors from cooking,

It is very pleasing to have the Primary School sharing the allotments with us again with two larger plots being taken by parents with children at the school now we only have two vacant taster plots. There has been some activity at the allotments already with some weeding and digging and even some seed sowing going on. At the moment everything looks very neat and ready for another bumper year with the soil getting warmer as well as the climate. I am looking forward to seeing the old faces and some new ones down at the allotments this year while we are tending our crops.

To be eligible for a plot, one must be a Parishioner of Woodham Walter, be an Educational establishment within the Parish or have a direct connection to the village.

For more details contact

Jane Weedon
janeanneweedon@gmail.com

Sue Cumming.
sue.cumming@hotmail.co.uk



Footpath Officer - Peter Warren



I've now completed nine years as the parish Footpath Officer and still enjoy making sure that our public rights of way are clear and safe to walk. I try to cover at least a couple of paths each day and endeavour to check all of our 28 footpaths and 5 bridleways at least twice a year. Any problems that I can't fix easily are referred to the appropriate farmer or landowner or failing that the Rights of Way department of ECC Highways. Unfortunately the job of Rights of Way Inspector for this area has been vacant for the past year so we no longer have a direct point of contact at ECC. Problems can be logged on the ECC website but progress can be very slow, for example the dodgy gate on FP19 next to the school was reported 5 months ago and has still not been inspected despite phone calls to chase it up. Let's hope that a new Inspector is appointed soon!

Nearly all paths in the parish have remained walkable throughout the year. This time last year many of our paths were flooded and scarcely passable due to the boggy mud. Over the past year things

have been a lot better and only a few paths remain waterlogged. ECC contractors Ringway Jacobs cut all 13 paths on the schedule in just a couple of days in mid-June (before the weeds took over!) and made a very good job of it. Despite some vicious winds last autumn only six trees have fallen across our paths during the past year. Several trees have sagged over leaving branches hanging across the footpath, these I have removed myself.

In an attempt to restore FP16 to its definitive line of many years ago the path has been rerouted to the north of Willow Cottages through The Wilderness for 100m. The work has been carried out by The Friends of The Flich Way and funded by ECC. In addition to tree clearance, two new bridges were required plus steps cut up an embankment. This same organisation has also done some restorative work on FP35 where it exits WW Common towards Pheasantouse Farm. Nobody in the Parish was aware that any of this was going to be done and, although this work is very much appreciated, I feel that it would make more sense to liaise with the Parish first in

case we could suggest a more pressing project to them. Digging out the ditch in order to drain FP19 springs to mind!

Whilst walking the local paths I also carry out my second job as Tree Officer. This is to satisfy the Parish Council's responsibility to check the trees on WW Common close to footpaths and those surrounding Bell Meadow. I also check various others in 7 locations around the village, to make sure they're healthy and not touching overhead lines. ECC also request that parishes check for Chalara Fraxinea (Ash Dieback). I'm pleased to report that I still haven't seen any evidence of the disease in the Parish and I hope that nobody else has either?

Please help me to keep our paths in good order. If you see anything that needs attention, or any improvement that you could suggest, don't hesitate to let me know and let's hope that we have a brilliant summer to enjoy our lovely WW countryside!

Peter Warren 01245 221326



St Michael's Church - Kathy Tompkins & Arthur Razzell



Although we have now been without a priest for over a year it has not prevented St Michael's from maintaining its position in the community, continuing with the things that we know work and trying new initiatives to keep pace with an ever changing world with different needs and higher expectations. Services have continued at St Michael's in the same format that is expected by our congregation and the wider community. Holy Communion Services have continued at the same time every month; Morning Prayer and Family services have continued without a break. New initiatives have



been tried especially the Pet Service, held for the first time last year, proving a great success and will be repeated this year. All annual services celebrating special festivals and in remembrance of loved ones have continued without a single lapse. During this interreg-

num, there have been six baptisms and four weddings with more booked for this year. During this time we have been truly inspired by the priests we have met and those already known to us namely Canon

Stephen Carter, Canon Dr Graham Blyth, Rev'd Ken Dunstan, Rev'd Lionel Webber, Rev'd Mary Cottee to name but a few. In addition, Archdeacon David Lowman, recently retired, and Rural Dean Sandra Manley have given us great support.



Our links with the village school are as strong as ever. Church members serve as School Governors and lead Assemblies. Those of you connected with the school will know that the children are leading our Family Service at the end of the month. How's that for a new initiative? Don't miss it! We are also enjoying a closer relationship with Tad-

poles, visiting regularly and welcoming them into church on several occasions.

We are enjoying the advantages of having a church with full facilities. By establishing a Social Committee, new events have already taken place. Seasonal walks followed by soup lunches, teas and picnics, musical evenings, flower demonstrations, lectures and simply gatherings to celebrate our wonderful flower arrangers or a special birthday.



We continue to welcome U3A Groups interested in the history of our church and its building, and we are fully involved in village activities including Bell Meadow Day and hopefully this year, the Queen's 90th birthday celebrations. Various charities have received our support including Maldon Food Bank, Embrace (working in Palestine with children of all faiths), The Children's Society, The Royal British Legion, Farleigh Hospice, and Ride and Stride in aid of Essex Churches. At a recent "Evening of Light Entertainment" an amazing £500 was raised for Water Aid.

St Michael's Church



As churchwardens, we have completed our term of office and our church now looks forward to new leadership under the present PCC. Although no one has come forward to take up the post of churchwarden, the new leadership will ensure that all our responsibilities are met in full with all church members taking on new roles. Already new initiatives are in hand for the efficient running of the church and we are very hopeful that suggestions now under discussion will prove beneficial to our Benefice.

It has been an amazing experience for Arthur and me to serve this community over the past few years. Not of course entirely down to us, but it gives us great pleasure, to leave office seeing our beautiful church with modern facilities, decorated both within the main area of the church and even in the vestry. A comfortable baptistery area for meetings and social activities, and a churchyard beautifully kept and at peace within its rural

setting completely maintained by volunteers. The Memorial Wall has been refurbished and extended thanks to your generosity. The lighting within the church has been adjusted and with the addition of another chandelier the lighting over the choir stalls is much improved. The main path to the church is due to be completed soon together with the installation of new lighting. We are indebted to so many individuals and families who have donated both their time and money to enable all this to be achieved.

So, what does the future hold for us? Do not listen to tales of gloom, our church is alive and open every day and intends to stay that way. Yes, we could do with a lot more support at our weekly services, but your expectation is that this church will be here for your celebrations in times of joy and for your consolation in times of sadness, we will not let you down. No one is ever turned away. New initiatives to encourage younger people to take part in Christian worship are in hand, and if you are a parent or guardian please help us in this endeavour. Share your ideas with us, we are not afraid of change, we are only concerned that everyone should have the opportunity to know

of God's love. Christianity is not just for Sunday mornings at 9.30am but is a way of life based on the Christian teachings of love and forgiveness.

Thank you for the trust you have shown us. Thank you to our PCC team, past and present, to everyone who has played a part in the daily running of the parish and all the recent improvements. We could not have asked for a better more supportive and loyal team than we had in you all.

Ending now with words we have used in recent annual reports - the doors of St Michael's Church will continue to be open for all. As we have said in the past and continue to say, there is no admission charge, no age barrier, colour, sex or disability discrimination. There are no exceptions.

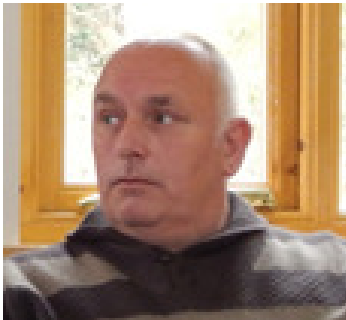
**St Michael's is here for you.
Please use it.**



Wood Corner Caravan Site - Steve Andrews

News from the Corner

As the saying goes, *No news is Good news*. The Danny Hayden effect continues and all is quiet and peaceful on site.



We have experienced some movement this year with 5 families moving on (some of

those fell over the end of last year and the beginning of this) but spaces were quickly filled with new families who have settled in to their new homes.

As previously reported, the Maldon Children's Centre utilised the porta cabin in the summer, and we hope to welcome them back this year.

The **Essex Countywide Traveller Unit** was successfully renewed in October for a further 3.5 year period, with Maldon remaining a partner. This has benefits for the Parish's in partner areas, as any unauthorised encampments on



Parish land will be managed by the Essex Countywide Traveller Unit at no direct cost to the Parish.

Steve Andrews
Essex Countywide Traveller
Unit Manager
Essex County Council

Woodham Walter Village Hall Association - Sarah Maxted



It has been another successful year for the Hall. We have several regular bookings ranging from keep fit classes to a sewing group.

Once again my thanks to the committee for their continued work in keeping the Hall running. Our treasurer Ken, handyman Ivor, secretary Mel, Ann, Doug & Peter.

As always the committee

would welcome some new members. It isn't an arduous task – meetings every 6 to 8 weeks, 2 fund raisers per year and a couple of tidying sessions

The Hall's 2 main fund raisers each year are the Art Show and the Village Revue. June Chandler, Tina Warren & Jane Weedon run the Art Show with assistance from the screen shifters & picture hangers

The revue which continues to come up with surprising new routines! The Women's Club really go to town each year with their performance & costumes. We also must also thank the volunteers who run

the bar & the waiters as well as the artistic director AJ & Mark Durham for running the evening.

Last year's target to repair the ceiling has been done as well as having the decorating done. We are still working towards insulating the ceiling & replacing the toilets amongst other things.

Once again I would like to thank the volunteers who help with maintaining the Hall and running the fund raising events.

To book the hall contact Andrew Ritchings 01621 811733 or email

caretaker-wwwh@btinternet.com

Woodham Walter Common - Chris Wheadon



This past year has been one of routine maintenance undertaken by Working Parties, unfortunately we had to cancel one working Party because of very bad weather.

The work we undertake concentrates on the areas which already rare flora, for instance the Bog below Pheasant House Farm which contains Sphagnum moss.

We had already removed a considerable amount of Holly from the adjoining slopes. The Holly had been utilising rainfall which now reaches the Bog area, and has improved it considerably.

We remove any intrusive species, e.g. bracken, which is pulled out by hand, and disposed of.

Another alien species is Himalayan Balsam, which also thrives in Boggy areas if allowed to do so. We have been very successful in removing the vast majority of this plant, by pulling out individual plants. And disposing of them. As you can imagine this is a very time consuming activity, however I am pleased to say that although it is unlikely we will be in the fortunate position that we have removed every single plant, our year on year "blitz" has been highly effective.

As already mentioned in previous Reports The Wildlife Trust is very keen to improve areas where Heather exists, and also to create new areas, with a long term aim to possibly link the areas, creating so called "Wildlife Corridors".

The two Heather areas, "New Heath" and "Rowan Hollow" are establishing well. This has been achieved by combination of hand digging the intrusive small Silver Birch saplings, and brush cutting and removal of intrusive Bracken.

In December a Working Party widened a section of Bridleway which had become increasingly restricted by encroaching Holly trees and bramble. This will improve the situation for all users of that particular section of path.



We are very fortunate to have such a large area of Woodland in our Village together with two small Heaths. All accessible using a number of local Bridleways and Footpaths, especially if you enter on foot from Common Lane and head South, so if you get the opportunity, I recommend having a look around.

Chris Wheadon
Volunteer Warden

Woodham Walter Parish Council - Party Tents for Hire

Party Tents For Hire



8m x 4m White

Party Tents

£50 for one £75 for two

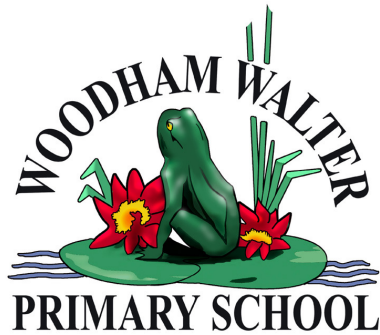
For bookings contact

Parish Clerk: Jacky Bannerman

01245 222595 (Mon-Fri before 6pm)

jacky@wwparishclerk.co.uk

Woodham Walter Primary School - Headteacher



Our pupils are very proud to be part of the village of Woodham Walter and greatly appreciate members of the community attending their Concerts, Exhibitions and Church Services. We currently hold a coffee morning every Friday to which all are welcome and are pleased to be able to invite members of the community to join our pupils for lunch on a Wednesday. Details of all our activities and events are on the school website

www.woodhamwalter.essex.sch.uk or further information is available from the school office 01245 223264.



We have had a busy and enjoyable year at the school. During the Spring of 2015, we saw the enhancement of our

outside play areas with beautiful new playground markings. It is lovely to see the pupils learning through playing games using these new markings.



Our pupils took part in 'Crucial Crew', an interactive safety initiative based around key life skills. Crucial crew is a fun way to prepare children to remain safe in a variety of emergency situations and to be aware of dangers they are likely to encounter as they advance through life. Experiences like Crucial Crew will encourage them to become responsible members of the community.



Many of our KS2 children are students with 'The Children's University'. The Children's University is a national initiative which aims to raise aspira-

tions and self-belief for children, foster curiosity and a love of learning, boost

achievement and improve life chances. It does this by promoting and rewarding participation in a range of extra-curricular activities. Each participant has their own *Passport to Learning* which records their learning journey. They collect hours in their passport for taking part in Children's University validated clubs and activities. Many of which are affiliated to our school.

Our School Council plays an active role in the life of the school. They recently visited the Houses of Parliament and the Moot Hall in Maldon where representatives of each school within the Blackwater Consortium met to hold their own Council Meeting. The main theme of the meeting this year was Road Safety.

We continue to be a lead Forest School and are most grateful to Mr. Carter and his company for allowing us to use their land. Our Infant children get a great deal of enjoyment and educational value from their weekly venture into 'The Forest'!

Mrs. Sue Dodd (Headteacher)
01245 223264
www.woodhamwalter.essex.sch.uk



Parent & Teacher Association - Simon Gray

Your village school of Woodham Walter is very lucky to have such supportive parents and staff to enable us to run a successful PTA, without which the children would not benefit from such items as sports kits, books and IT equipment and playground improvements.

A huge thank you, yet again, must go to all the PTA members for their hard work and enthusiasm and to all the other staff, parents and local residents who have supported us again this year.

There have been many changes in the officers of the PTA in the last year and at an EGM in November, Simon Gray was voted in as Chair, Melanie Coates-Jones was voted in as Treasurer with Mary Theodoropolous as Vice Treasurer, Louise Flavell would continue as Secretary and Caroline Charlesworth as Vice Chair. We continue to have a well-established committee to which a number of the reception year parents have joined, as well as a great ongoing and enthusiastic team of teachers and school staff.

A great debt of gratitude is due to Melanie Coates-Jones who has spearheaded the PTA for a number of years raising awareness and well needed funds.

The Bonus Ball has continued throughout the year which still raised a small, but important amount for the PTA fund but this has now been replaced by a new "100 club" whereby numbers from 1 to 100 can be bought every month and 3 randomly generated winners for 1st, 2nd and 3rd are drawn monthly with prizes of £25, £15 and £10 available every month. With all the numbers sold, half of the money goes to the PTA which should raise an amazing £600.

The year of fundraising events started in Easter with the 'Bake & Take' (now called the "bazaar") This

well attended, if not noisy, event raised a total of £624.15.

In May we had the annual 'Bridge luncheon' at Little Baddow Memorial Hall and this raised an amazing £488 and is fast becoming very popular. We are hoping for even more success this year in June.

The 'Geo-Caching' family fun event and BBQ raised £367 this year, an improvement on last year and we'll be running this again this year.

June played host to our annual Jumble Sale at Danbury Village Hall, a day of absolute madness, carnage and fun all thrown into one hall, which raised £767.

In July our amazing school fete was extremely well attended and with fantastic weather and the invaluable support of parents, local business and the community we raised a total of £6159



Over the summer period we were able to support the village again with a Coconut Shy at the successful Bell Meadow Day, raising £75.50.

Our golf day fund raiser at The Warren returned an amazing £640 in October and we'll be running another one in 2016 which has yet to be confirmed.

A number of Quiz evenings during the year also raised a total of £421 and the school disco in September raised £132

We staged a "Kids on the Catwalk" show in November which was a great day where the kids were able to dress up and show off their modelling talent, and 2015 was finally

brought to a close with the Xmas Disco which raised £212 and the Xmas Bazaar which raised a whopping £358.

2016 started with a great School Film Night which showed Inside Out to Key Stage 1 and Big Hero 6 to Key Stage 2. It was thoroughly enjoyed by all and raised approximately £210.

In March we held our Easter Bazaar which was well supported and raised about £230 on 23rd March.

Funds raised by the PTA are used to purchase vital additional resources for the school including maintenance to the school playground area, 40 learnpads for the children, blinds in the main hall, as well as subsidising the school tracksuits and for treats such as the Beauty and the Beast Christmas Pantomime as well as contributing to the cost of school trips.

We are planning some really exciting events for this year which we would love the community to join us so put a date in your diary for the following:

Grab yourself a bargain at our jumble sale on **16th April** at Danbury Village Hall – or why not have that spring clear out and donate some jumble please (deliver to school on 15th April or to Danbury VHall from 9am on 16th).

Charity Bridge Luncheon **Friday 17 June 2016** - 2 course lunch and plenty of bridge played, submit a duo/ four.

Geocaching (a high-tech treasure hunt around Woodham Walter) event currently scheduled for **Sunday 15th May** – why not enter a team?

Our amazing School Fete on **Sunday 10th July** – a traditional fun day with the theme this year of "Vintage"

The Charity Golf Day at The Warren

We look forward to seeing you and thank you all for your support.

Friends of St Michael's Church - Brian Cumming



The Friends of St. Michael's Church is a non-religious group which was formed in 2005 to support the maintenance and development of this important historical building and its grounds.

The 'Friends' organisation is well supported within the village and we are very grateful for the skills, knowledge, people power and financial support that our Friends (and sometime their friends too) provide. Our membership currently stands at 122 people and we would welcome anyone who might like to join us.

The 'Friends' support the Church in two fundamental ways – by providing people power and by funding professional help where our own knowledge or skills are not appropriate for the task.

Looking back over the years I think that we can be proud of the improvements that we have been involved with:-

- A new gate and refurbished fencing
- The new toilet block and alternative access to the building
- The new kitchen facility
- Improved access to the main entrance and associated pathways
- Redecoration of the interior of the building and the vestry
- Repairs to the windows
- Repairs to historic graves
- Repairs of and an extension to the Memorial Wall



In addition to these activities we have organised a number of working parties (typically 2 to 3) per year to provide general maintenance, cleaning and repair of the Church building and grounds.

Recently a local resident kindly gave us a large quantity of bulbs which were swiftly planted by a working party. These bulbs line the railing fence and the inside of the front fence; enjoy them on your next walk through the Church yard.

Looking forward, there is still much to be done; the improve-

ments to the main pathway need to be extended to the road, there is still a damp problem associated with the south wall of the building that requires resolution, the wooden fence is due for another coat of preservative and there is always the ongoing need to maintain and tiding the Church yard.

My grateful thanks to all our supporters.

Please contact me if you would like to join our ranks.

Brian Cumming

Chairman and Membership Secretary





Tadpoles Nursery - Pam Seear



At the end of July 2015 we completed our first full year in our new home, as always we have been very busy since.



Over the summer break we worked hard on developing the outside area, this consisted of a paved area which included a lovely new sand pit, which is extremely well used. We also decorated the play house and brought lots of new equipment, the improvements have certainly made a difference to us all.



As always through the year we have been on lots of outings in and out of the village, just recently we went to see some lambs. Having invited all our families along on a chilly Satur-

day morning we were really pleased to see such a good turnout. A good time was had by all, many thanks to Jenny and Lee Hughes for their invitation.

We have also paid several visits to the church

and enjoyed a story and some singing with Kathy, Viv, Angela and Arthur thanks again to them.

This year we were extremely proud when our volunteer Sarah Harbour who won not only a regional award but also went on to win a national award for 'Volunteer of the Year in a Pre-school setting'. Sarah was presented with her award by the television presenter Amanda Lamb at the Pre-school Alliances AGM in June. Sarah is now an employee and a valuable member of our staff team.

Our year has again followed its usual pattern with our nativity at Christmas, and our picnic and outing in the summer.



This term we enjoyed a very busy time, our 'People who help us' week was particularly busy with visits from a nurse, a policeman and a lolly pop man, thanks again to all who gave their time. More recently we had our Pet week, this in-



cluded some very different visitors in the form of guinea pigs, a horse, a turkey, micro pig and a dog! All of who are pets of children or staff at the



nursery.

We are looking forward to the summer term, with lots of planned time at our allotment, our annual Teddy Bears Picnic and Tadpoles outing as well as our 20th birthday party.

We were also very excited to launch our brand new website, which is proving very popular so please check it out. We continue to offer all day sessions on Tuesdays, Thursdays and Fridays we also offer lots of different sessions every day of the week, term time only, if you would like to join us or have any questions please contact me, Pam at

tadpolesnursery@hotmail.co.uk

Telephone: 01245 222046,

Nursery mobile 07710903126.

Neighbourhood Watch - Brian Cumming



During the year I attended a number of Neighbourhood Watch meetings in Maldon as the Woodham Walter representative, in addition to these meetings I receive regular information from the local police with summaries of crimes that have been conducted in the Maldon area.

There has been little new to communicate this year as we are lucky to be living in a low crime area and the nature of the threats to us has not changed.

Criminal activity of relevance to us comes in two forms. Firstly, theft from cars, sheds and occa-

sionally houses and secondly internet and phone based fraud. Of the two, the internet and phone based attacks seem to be the most prevalent and potentially the most damaging. Like many others, I regularly receive phone calls from 'helpful' folk (usually with a foreign accent) offering to help me fix problems with my computer, and I often get emails, seemingly from people I know, offering various internet links for me to follow or computer files to open.

Sadly, these criminal activities drive us inexorably down the road of 'trust no one':-

- Never follow the advice or demands of an unsolicited caller, no matter who they claim to represent.
- Never click on an unexpected computer file nor follow an internet link even if it

seems to be coming from a known and trusted acquaintance.

In each case check the authenticity of the approach by independent means before committing to anything and beware of crooks who remain on the phone line after you think you have hung up and then pretend to be your bank or the police or whatever; to be certain, wait for 15 minutes before making your call or, better still, use another phone.

Finally, as always, please keep your eyes and ears open and your mobile phone handy; ring the police straight away using 999 if you suspect something criminal is happening.

Brian Cumming
NHW Co-ordinator

New Waste Collection Service



On the 6 June 2016 the way in which Maldon District Council collects your refuse & recycling will change.

All households will be receiving a letter at the beginning of April to advise how the changes will affect their property and how the new alternate weekly service will work.

During May, the majority of households will receive a wheeled bin for refuse and a supply of pink sacks for mixed recycling. Residents are asked to continue

to use their blue box to recycle their glass. Food waste is to be recycled in your food recycling bin and will continue to be collected weekly. A detailed information booklet will also be delivered at the same time.

A small number of properties which cannot accommodate a wheeled bin will remain on black sacks for refuse collections.

There will be a display of the new waste collection service at the Annual Parish Meeting from 6.30pm on Monday 18th April in Woodham Walter Village Hall with a short presentation during the meeting at 8pm.

For more detailed information please visit www.maldon.gov.uk/newwaste

	What Will We Collect?
Grey Bin Week	Grey wheeled bin (or black sacks) containing general refuse Food waste caddy
Recycling Week	Pink sacks containing mixed recyclable items Existing recycling box for glass Food waste caddy.

Speed Indicator Device



An example of a Speed Indicator Device

Woodham Walter Parish Council are currently looking into purchasing our own Speed Indicator Device (SID) for the village in order to make drivers more aware that they're exceeding the 30mph limit. We feel that this is something that would benefit all members of our community.

Unfortunately this equipment is rather expensive. Ideally what we would like to purchase is a SID Data Capture version (approx £4500 plus battery or solar panel, pole and installation).

We already have one pole by Bell Meadow (this currently receives a Vehicle Activated Sign which is shared with other villages on an ad-hoc basis) and Essex County Council

Highways would be commissioned to erect at least one additional pole in the village for us. We could then download and analyse the results so that the SID could be moved from site to site with best effect. This information could be used to target times for carrying out the Community Speed Watch activity and also for letting Police officers know when would be a good time to attend for enforcement.


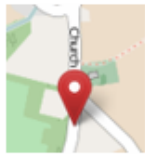
We were successful in our application to the Bell Meadow Village Association for a Legacy Grant of £2000. We are now in the middle of a lengthy process of additional grant funding - we have applied to the Local Highways Panel who are investigating our case and are due to meet in April to make a decision.

If we are unsuccessful then the BMVA has agreed that they will add a further £1500 funding and The Parish Council has earmarked £1000 in precept which will be carried over to 2017/18 if it is not required for this purpose.

We really hope that we can be successful in achieving the purchase of this equipment in the next year which we expect will be of great benefit to all of the village and act as a good reminder that Woodham Walter village has a 30 mph speed limit.

As part of the investigation by the Local Highways Panel we have received some information that has been gathered regarding the proposal for a SID & Poles on Church Hill and Rectory Road. Two seven day automatic traffic counts took place in November and the speed/volume data is feeding into the scheme validation process. The table below shows some of the data which was gathered.

The full data shows that on Rectory Road and Herbage Park Road over 70% of vehicles were in excess of the 30mph speed limit during the test period. We are now hopeful that this sufficiently demonstrates the problem and that we will be successful in our application. Hopefully we will have more information soon.

Road Name	Location		Posted Speed limit	Directions of Travel	Average Speed
Rectory Road	90m South of West Bowers Way		30mph	Southbound	33.0mph
				Northbound	33.4mph
Herbage Park Road	60m South of Oak Farm Road		30mph	Southbound	33.7mph
				Northbound	34.5mph

Community Agent - Jan Hawkins



Thank you for inviting the Community Agents to submit an article for your Parish Council Annual Report. Community Agents has been a successful partnership between Rural Community Council of Essex, Red Cross, Neighbourhood Watch, Age UK and funded by Essex County Council.

Following the successful transition from Village Agents to Community Agents, the Community Agents scheme is now in its second year and has proven to be a huge success in and around Essex. Last year Community Agents were proud to be awarded the 'You Make the Difference In Essex Award'. In 2015 Community

Agents Essex visited and supported 4,072 older people around the County. 2,062 clients were referred to us from Social Care, and as a result of our support, less than 10% were referred back to Social Care.

Community Agents are a team of local people who live in the area and know their community really well. They work tirelessly to support older people, generally over the age of 65 and their informal carers to find solutions to help them live independently. The agents will do home visits to talk about issues such as mobility, healthy living, practical living skills and help to connect people with social groups. They help people find solutions to the issues they might face through self-help or by helping one another.

**YOU MAKE THE
DIFFERENCE IN
ESSEX AWARDS
2015**

Last year saw the departure of your local Community Agent Christine McDonald, and the Woodham Walter area is now covered by Community Agent Jan Hawkins. (Seen below second from right) Jan is one of the original Village Agents, and has an extensive knowledge of local opportunities for support, and often helps people to make connections back to their family and local community. Jan is available by telephone on 07540 720605, email or can visit someone at their home.



To make a referral call **0800 977 5858**

Email: enquiries@caessex.org.uk or
jan.hawkins@caessex.org.uk

www.communityagentsessex.org.uk

RCCE House, Threshelfords Business Park,
Inworth Road, Feering, Essex CO5 9SE

Registered Charity No. 1097009. Company registered in England and Wales No. 4609624

Bus Services for Woodham Walter

Further information on bus services can be found the Essex County Council website at: www.essexhighways.org/Transport-and-Roads/Getting-Around/Bus and timetable information can be found at: www.traveline.info

Regal Busways

From: 04/04/2016

CHELMSFORD - DANBURY - LITTLE BADDOW - WOODHAM WALTER - MALDON

Mondays to Fridays	5	31A
	Th	
Chelmsford Bus Station (Stand 2)		1715
<u>Danbury, Eves Corner</u>	0943	1742
Little Baddow, North Hill, adj Spring Close	0950	1750
Woodham Walter, Spring Elms Lane, adj Bassetts Lane	0955	1758
<u>Woodham Walter, The Bell (o/s)</u>	1000	1801
Woodham Walter, Council Houses (opp)	1001	1804
Maldon, All Saints Church (o/s)	1011	1814
Maldon, Tesco Store	1013	
Maldon, Morrisons	1019	

MALDON - WOODHAM WALTER - LITTLE BADDOW - DANBURY - CHELMSFORD

Mondays to Fridays	31A	5
	Th	
Maldon, opp Morrisons, Wycke Hill	-	1230
Maldon, Tesco Store	-	1235
<u>Maldon, White Horse</u>	-	1238
Woodham Walter, Council Houses (adj)	0725	1247
<u>Woodham Walter, The Bell (opp)</u>	0728	1249
Woodham Walter, Spring Elms Lane, adj Bassetts Lane	0731	1252
Little Baddow, North Hill, adj Spring Close	0738	1257
<u>Danbury, Eves Corner</u>	0746	1304
Chelmsford Bus Station (Stand 2)	0813	

CHELMSFORD - SANDON - DANBURY - LITTLE BADDOW - WOODHAM WALTER - MALDON

Saturdays only	31A	31A	31A	31A
Chelmsford Bus Station (Stand 2)	0730	0845	1105	1515
<u>Danbury, Eves Corner</u>	0752	0912	1132	1542
Little Baddow, North Hill, adj Spring Close	0800	0920	1140	1550
Woodham Walter, Spring Elms Lane, adj Bassetts Lane	0808	0928	1148	1558
<u>Woodham Walter, The Bell (o/s)</u>	0810	0930	1150	1600
Woodham Walter, Council Houses (opp)	0813	0933	1153	1603
Maldon, All Saints Church (o/s)	0822	0942	1202	1612
Maldon, Tesco Store (Stop 1)	0827	0945	1205	-

WOODHAM WALTER - LITTLE BADDOW - DANBURY - CHELMSFORD

Saturdays only	31A	31A	31A
Maldon, Tesco Store (Stop 1)	1000	1210	1530
Maldon, Town Centre o/s White Horse	1004	1214	1534
Woodham Walter, Council Houses (opp)	1013	1223	1543
Woodham Walter, The Bell (opp)	1016	1226	1546
<u>Woodham Walter, Spring Elms Lane, opp Bassetts Lane</u>	1019	1229	1549
Little Baddow, North Hill, adj Spring Close	1026	1236	1556
Danbury, Eves Corner	1034	1244	1604
Chelmsford, Bus Station (Stand 2)	1100	1310	1630

Woodham Walter Parish Council

Parish Clerk: Mrs Jacky Bannerman
 Burnt House, Burnt House Road, Woodham Walter CM9 6RS
 Phone: 01245 222595 (Monday-Friday, Before 6pm)
 E-mail: jacky@wwparishclerk.co.uk

Woodham Walter Parish Council website is:

www.essexinfo.net/woodhamwalter-pc

Here you can find information about the Parish Council, agendas, minutes and other village information.



Who's Who and What They Do

Parish Councillors

Peter Warren - Chairman & Footpath Officer & Tree Officer

Joanna Symons - Vice Chairman & Primary School Community Governor

James Bunn - Parish Councillor & VDS

Mark Durham - Parish Councillor & District Councillor & Bell Meadow Village Assoc.

Jenny Hughes - Parish Councillor

James Rushton - Parish Councillor & Allotment Association

John Tompkins - Parish Councillor & Village Design Statement



Parish Council Meetings

Woodham Walter Parish Council meets at 8pm on the second Monday of the month, usually at Women's Club room, Top Road. Members of the public are very welcome to attend and can address the council on agenda items or any issues relevant to Woodham Walter. The agenda for the meeting is displayed on the notice board outside the former shop and on the website during the week preceding the meeting.

Diary Dates 2016/17

11th April 2016

18th April 2016 Annual Parish Meeting (V-Hall)

9th May 2016 (AGM)

13th June 2016

11th July 2016

15th August 2016 (tbc)

12th September 2016

10th October 2016

14th November 2016

12th December 2016

9th January 2017

13th February 2017

13th March 2017



Keeping in touch

Woodham Walter Parish Council works hard to keep the community informed of issues and information which affects residents.

As well as this annual printed report and our Annual Parish Meeting (Monday 18th April at 8pm in WW Village Hall) we include notes from our meetings in the monthly parish magazine. All our Parish Council meetings are open to the public and you are warmly

invited to attend on the second Monday of the month at 8pm in Women's Club Room.

Full copies of the minutes are available from our clerk and on our website. www.essexinfo.net/woodhamwalter-pc

As well as this we provide information on the noticeboard outside the former shop and there is lots of other information on our website.

Our clerk sends out an email with any particular news which is useful such as when the refuse and recycling days change after bank holidays or during poor weather.

To be included on the group village email for such information just send our clerk your email address:
jacky@wwparishclerk.co.uk