

HARE COURSERS TACKLED

RET have continue to support local businesses and residents by tackling illegal hunting of hares with dogs, known as hare coursing.

Hare coursers trespass on land to pursue hare, damaging crops and being aggressive.

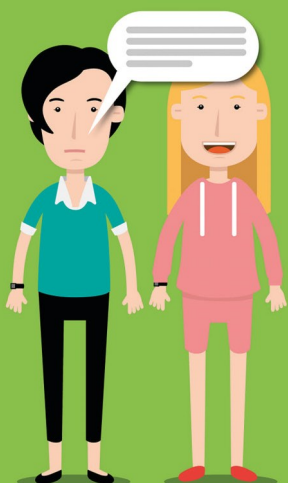


One group was stopped in Uttlesford with the help of the police helicopter and their vehicle and dogs seized.

RET are targeting patrols in hot spot area's. We have reduced hare coursing by 67% compared to last year. That's 93 less incidents in Essex.



If you suspect hare coursing, ring us on 101 or 999 for a live incident.



Domestic abuse is all about control. If you notice that someone seems to be controlled in all areas of their life, it could be a sign they are being abused.

SETDAB.org

Now there's a quick online alternative to calling 101 or visiting a police station:
DIGITAL 101



Do it online at:
essex.police.uk

**IN AN EMERGENCY
ALWAYS CALL 999**

STOLEN VEHICLES RECOVERED

RET have been at the forefront of the fight against theft of vehicles from rural communities.

The team were alerted to a Land Rover stolen from a farm in Uttlesford. The vehicle had huge sentimental value to the owners. Unfortunately, there were no obvious lines of enquiry to help find it, so RET resorted to good old fashioned policing.

The team scoured the county until they located a similar vehicle hidden in Basildon. Checks revealed it was the stolen vehicle but



now sporting false numberplates. After being checked by our Crime Scene Investigators it was returned to the grateful owners, only four days after it was reported stolen.

Whilst on scene, the team also located another three suspected stolen vehicles including a quad bike and an off road vehicle.



PREVENTING THEFT

The team have also been working with New



Holland Tractors based in Basildon to prevent theft and raise awareness of rural issues.

Ch Insp Balding and Pc Wright have both visited the factory recently and we have exciting plans to work together.

COMMUNITY VISIT

PC Wright visited some very excited Beaver Scouts in West Bergholt, Colchester.

The group were given a talk on what police officers do, how to stay safe and when to call us.

The group also had a chance to try on police equipment and look around one of our police cars.



If you would like us to visit your group or event, email us at 74973@essex.police.uk

KNIFE ARREST

RET officers are out on patrol across Essex every day of the week. As well as being rural policing specialist, they are still front line police officers.

RET officers were on patrol in Southend when they noticed a car acting suspiciously.

The officers stopped the car and searched the occupants. A large knife was found in the



passengers footwell. The driver also failed a roadside drugs test.

Enquiries continue.

CANNABIS FARM SMASHED

RET executed a pro-active drugs warrant at a farm in Basildon.

A large cannabis grow was discovered in an outbuilding. This was dismantled by the team and the plants, which were nearly ready to harvest, destroyed.

RET work across the county to disrupt criminal activity that effects our rural communities.



STRAY HORSES

The team were called to deal with four escaped horses in Chelmsford which were loose on the road and causing a danger to road users.

After much persuasion they were returned to their field.

Unfortunately none were microchipped so we were unable to locate their owner to tell them their fence had been cut.



If you own a horse,

see the DEFRA website for details of microchipping and the database.

HORSE WATCH LAUNCHED



A scheme asking horse riders to be our eyes and ears has launched in Uttlesford.

Email us for more information - essex.watch.liaison.officers@essex.police.uk

DOG ENGAGEMENT EVENTS

The team have been busy speaking to dog owners about dog theft, attacks on wildlife and other issues.

Three events have been held so far in north Essex with more planned across the county.

The team worked with Park Rangers in Castle Park, & Highwoods after several animals were attacked by dogs.



See our Twitter account [@EPRURAL](https://twitter.com/EPRURAL) for upcoming events

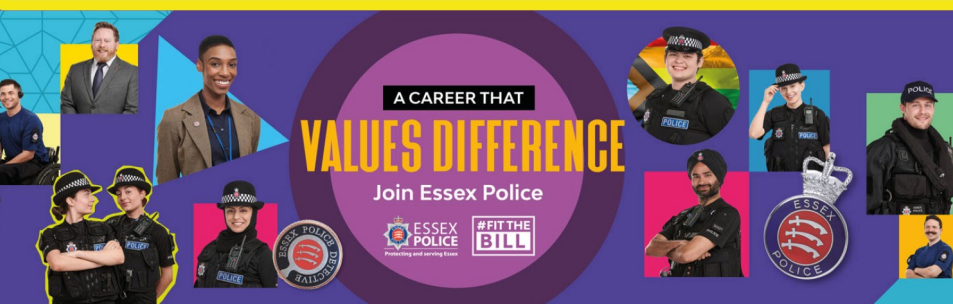


Digital 101

You can report non-emergency crime by calling 101 or by using **Digital 101**, our quick and easy to use online service that's available at any time.



Digital 101 is available on the Essex Police website: [essex.police.uk](https://www.essex.police.uk)



A CAREER THAT
VALUES DIFFERENCE

Join Essex Police



If you, or anyone you know, is interested in protecting and serving Essex, you can follow us on social media, or search **#FitTheBill**